

1812 No1 Ed1 v4

Templeton Journal 1812-1813 Fiche No 1
1 January to 31 December 1812

117 pages, 9584words

[Note - many pages had been scanned out of sequence and the order has been rectified in this version of the transcription to bring into line with the original. See end for a summary of these changes.]

PDF	DAY	MONTH/YEAR	JOURNAL PAGE
1		1812	
		1813	
2		January 1812	
	1	Ther at 8 AM. 38. Fine	
		day with a trifling shower or	
		two	
	2	Ther at 8 AM. 34. Fine	
	3	Ther at 8 AM. 33.	
		great deal of Mist	
		through the day and	
	hoar frost at Night		
4	Ther at 9 AM. 32	Snow	
	falling in the forenoon		
5	Ther at 9 AM. 34. Frosty		
		<i>Motacilla Troglades</i>	
		Wren Singing	
6	Ther at 9 AM. 33. Thaw		
	with some Rain		
3		[Blank]	
		[Jan 7-20 missing]	

January 1812

21 Ther at 9 AM. 34. Fine

day

22 Ther at 9 AM. 32. Fine

23 Ther at 9 AM. 34. Fine

24 Ther at 8 AM. 28. Fine

Frosty day.

Found in the Belfast Mar

-ket, a Specimen of the

Forked Hake Pennants

Zoology No. *Blennius*

Phycis Shaws Zoo.

Colour a grey White with lit

-tle variation on the back

or belly, the principle Charac

-ter consists in the two rayed

ventral

ventral fins, the scales were

large and the Margin of each

black.

It was brought with a parcel

of Haddock and was of seem

-ingly a large size as it

was about 20 inches long

Saw a bird in the grove which

appears to be a Turtle ---

25 Ther at 8½ AM. 35. Fine

Thaw without Rain

26 Ther at 9 AM. 38. Pleasant

grey day.

Prismatic colour about the Moon

at 9 AM Stormy Night

27 Ther at 8 AM. 45. Some hea-

vy Showers in the Morning

Rain and Wind at Night

[28 January to 8th February missing]

7

February 1812

9 Ther at 8 AM. 40. Fine day

Wet at Night

10 Ther at 8 AM. 44. Some

Rain at Night

Hazle and *Erica her*

-bacea Flowering

11 Ther at 8 AM. 43. Heavy

Rain

- 12 Ther at 8 AM. 44 A heavy
Rain at Night
- 13 Ther at 8 AM. 34 Breezy
cold day. Wet Windy Night
- 14 Ther at 8 AM. 39 Snow
Showers

6

February 1812

- 15 Ther at 8 AM. 36. Fine day
Mountains covered half
way down with Snow
Single Blue Hepatica Flow
Anemone Hepatica
- 16 Ther at 8 AM. 37 Some
Rain in the Morning
- 17 Ther at 8 AM. 49. A Shower
or two with Sunshine
Crocus biflorus Flowering
- 18 Ther at 8 AM. 33. Dark
dry day
- 19 Ther at 8 AM. 46. Some Shower
Chrysopenium alterni
-folium.
Crocus Susianus Cloth of Gold Cro
Black bird began to Sing

Groundsel in Flower

9

20 Ther at 8 AM. 46. Heavy
Showers

21 Ther at 8 AM. 48 Heavy
Rain during the forenoon

22 Ther at 8 AM. 42. Wet &
Windy at Night

Crocus sulphureus. Old

Cloth of Gold Crocus Flow
-ering

23 Ther at 8 AM. 40 Heavy
Hail Showers

Went with M^r Williamson
to M^r Harveys Nursery
got there

Cornus Canadensis

Amaryllis Atamasco

Hippophoea Canadensis

8

February 1812

24 Ther at 8 AM. 43 Heavy
Rain during the Morning

Emberiza Citrinella Singing

25 Ther at 8 AM. 35 Snow fell

during the Night which
remained on the Mountain
and Many parts of the
lowlands during the day
Received from Mr Harvey

1	<i>Prunus Mahalel</i>	/9 each
1	<i>Canadensis</i>	/9
1	<i>Cerasifera</i>	/9
1	<i>Alragene Austriaca</i>	2/6
1	<i>Alpina</i>	2/6
1	<i>Americana</i>	2/6
1	<i>Rosa Moschata simplex</i>	/9
2	<i>Pinus pumilio</i>	2/6
1	<i>Acer Montana</i>	1/
1	<i>hybridum</i>	1/
1	<i>Creticum</i>	1/
1	<i>Gleditsia Tetrasperma</i>	3/6
1	<i>monospermia</i>	3/6

Phye

[26 February to 6 March missing]

11

March 1812

7 Ther at 8 AM. 44. Fine day

- 8 Ther at 8 AM. 36. Dry day
Narcissus minor Flowering
- 9 Ther at 8 AM. 35 Dry
Erythonium Dens Canis F
- 10 Ther at 8 AM. 43. Fine
dark Mild day
- 11 Ther at 8 AM. 41 Dry Wet
at Night
- 12 Ther at 8 AM. 43. Rainy
Night Cold dry day
- 13 Friday Ther at 8 AM. 35. Some
Hail Showers Mountains
half way down covered with
till 12 M.
- 14 Sat. Ther at 8 AM. 35. Snow
On the Mountain tops Rain
in the Afternoon
- 10**
- March 1812
- 15 Sunday Ther at 8 AM. 38. Cold
Easterly wind with Hail Showers
- 16 Mon. Ther at 8 AM. 35 Cold
Easterly Wind with some
hail Showers
- 17 Tuesd. Ther. at 8 AM. 34½ Cold

Easterly Wind with Sunshine

18 Wed Ther at 8 AM. 36. Snow

Showers, lying about 9 PM

19 Thur. Ther at 8 AM. 33.

ground covered with Snow an Inch

and a half deep. Heavy Snow

Showers through the day from

the East.

20 Fri. Ther at 8 AM. 35 Cold

dry day, heavy Snow driven

in Wreaths at Night

Received a Specimen from Bel

-fast Market of *Gadus luscus*

13

March 1812

21 Sat. Ther at 8 AM. 35. This

Morning the Snow in deep

wreaths. Thawing without

rain through the day with

strong Wind, Stormy and Rain

at Night

22 Sun. Ther at 8 AM. 39. Breezy

dark dry day Snow almost

gone

23 Mon. Ther at 8 AM. 33½

Sleeting fast, Showers of Rain

- 24 Tues. Ther at 8 AM. 35. Dark
cool day with some snow falling
Received from Mr O Biorne of Carrickfergus
a fine Specimen of *Mya tameata* and
Neris pectinata or *Sabella Alypolata*
- 25 Mon. Ther at 8 AM. 32. Ice on
the small waters all day
Frazaria Sterilis in Flower
- 26 Ther at 8 AM. 28. Fine bright
day.
- 27 Frid. Ther at 8 AM. 39 Wet Mo-
-rning Very Wet day

12

March 1812

- 28 Sat. Ther at 8 AM. 47. Misty
Damp day
- 29 Sun. Ther at 8 AM. 43. Very
Wet night Wet day
Pulmonaria officinalis Fl.
Mr W^m. Tennent told me the
other Evening, that an obser-
-ving Gentleman resident
near the River Bush, told him
that the Male and female

Salmon came from the Sea
together ascending the river
to the place where they chose
to deposite their Spawn, which
is gravelly places where there
is a gentle current, after
exerting equally their
powers

15

March 1812
power to form a hollow bed
for their Spawn, they rub their
bellis together and deposite the
contents, which they afterwards
unite their efforts to cover over
they then wait patiently in
the neighbourhood until the
young are evolved, who
seem by instinct to follow
their protecting parents, who
chase Trout or any other fish
that attempt to prey upon
the young fry, The father and
Mother pursue their course
to the Sea, attended by their

offspring, the Salmon Fry which
remain

14

March 1812

remain in the Rivers until
the end of Spring, this Gentleman
thinks, are the offspring of Pa
-rents that have met with
sum Misfortune

- 30 Mon. Ther at 8 AM. 38 Wet day
31 Tues. Ther at 8 AM. 38. Wet
day

April

- 1 Wed. Ther at 8 AM. 38 Some
Showers
2 Thurs. Ther at 8 AM. 47. A Fine
day with some Showers
3 Frid. Ther at 8 AM. 45 Some
Heavy Showers

17

April 1812

- 4 Sat. Ther at 8 AM. 41. Fine
Bright day

Fumaria solida }

Anemone Apponina } Flowering

Erythronium Den Canis }

Ranunculus Ficaria }

5 Sun. Ther at 8 AM. 41. Fine

Bright day

Cornus Mascula }

Potentilla alba } Flowering

Ixia Bulbocodium }

6 Mon. Ther at 8 AM. 45.

Fine day

7 Tue Ther at 8 AM. Wet day

8 Wed Ther at 8 AM. 40. Dry

9 Thur Ther at 8 AM. 43 Dark

dry day

Juncus campestris Fl

16

April 1812

10 Fri. Ther at 8 AM. 39 Dry Cold

day

11 Sat. Ther at 8 AM. 39. Fine

day

Motacilla Trochilus Come

and singing

A Flock of Fieldfares *Turdus*

Pilaris.

12 Sund. Ther at 8½ AM. 39. Fine
day
Sand Martins (*Hirundo Riperia*)
in great plenty at the High Sandy
bank of the Manyburn

13 Mon. Ther at 8 AM. 41½ Fine
day
Caltha palustris Flow

14 Tues. Ther at 8 AM. 43. Fine
day

19

April 1812

15 Wed. Ther at 8 AM. 46. Fine
day

16 Thur. Ther at 8 AM. 37. Dark
Cold Wind. a little snow

17 Fri. Ther at 8 AM. 39 Frosty
Morning Fine day

18 Sat Ther at 8 AM. 36. After a
Frosty Night Ice on the ditches
through the forenoon where
the sun did not get at the
water.

Viola Canina Flowering

A Common Swallow near the

Lagan Side

19 Sun. Ther at 8 AM. 40 Fine

day Rain at Night

Fieldfares in the Oak tree

field

18

April 1812

20 Mon. Ther at 8 AM. 41 Fine

Some Hail Showers

Swallows in town saw 5 or 6

21 Tues. Ther at 8 AM. 46 Some

Slight Showers.

22 Wed. Ther at 8 AM. 46 Some

Slight Showers Fine day

23 Thur. Ther at 8 AM. 40 Fine

day

24 Ther at 8 AM. 43. Showers

going about

Sloe Thorns, *Prunus spinosa*

Ground Ivy (*Glechoma Hederacea*)

25 Sat. Ther at 8 AM. 47. Hail Show

-ers

21

April 1812

26 Sun. Ther at 8 AM. 36 Snow

and Hail Showers which whiten

-ed the Mountains halfway

down

Scilla Italica & *S. Amoena* Flowering

27 Mon. Ther at 8 AM. 45 Fine

28 Tues. Ther at 8 AM. 41. Wet

day

29 Wed. Ther at 8 AM. 45. Wet

30 Thur Ther at 8 AM. 43. Some

Trifling Showers

Stellaria Holostea }

Ranunculus [indistinct] } Flowering

Fragaria Vesca }

Chaerophyllum sylvestris }

Fragaria sterilis Going out

of Flower

Received a Specimen of *Syn*

-athus Acus

20

May 1812

1 Fri. Ther at 8 AM. 43. Fine

day

2 Sat. Ther at 9 AM. 41. Fine

Cuckoo and White Papilio

Papilio Napi. Don. 2801

Prunus domestica

3 Sun. Ther at 8 AM. 45

Prunus Avium from Fort William

Fl.

4 Mon. Ther at 8 AM. 44 Fine

day

5 Tues Ther at 8 AM. 44 Fine

Hail

6 Wed Ther at 8 AM. 40 Fine

day with some particles of

Snow falling

White Throat

Reed Wren

Come

Wen

23

May 1812

Went to Mr Harveys Got

Esculus macrostycha

Hemerocallis Japonica

Coreopsis verticellata

tenuifolia

Arum Dracunculus.

Oenothera fruticosa

Clematis erecta

Viola numularia

} 2 Unknown

}

7 Thur. Ther at 8 AM. 41 Cold

Fine day

Anchusa sempervirens Fl

Pyrus Botryopium

Snowy Pear. &c

8 Fri. Ther at 8 AM. 54 Fine

Warm day

Papilio urticae and a White

Butterfly perhaps the Male

of *P. Cardamines*, appeared

this day.

9 Sat. Ther at 8 AM. 54 Showers

Phlox subulata Flowering

22

May 1812

10 Sun. Ther at 8 AM. 55. Some

Showers

Spiroea laevigata

Ulmifolia

Mespilus pumila

Pyrus Ovalis, Oval leaved Pear

11 Mon Ther at 8 AM. 51. Heavy

Rain which made a flood in
the Bog Meadows some Show
-ers through the day

Gentiana acaulis } Fl

Orchis mascula }

12 Tues Ther at 8 AM. 52. Some
Showers

Aspodelus luteus Flow

Hyacinthus Romanus

13 Wed. Ther at 8 AM. 55 Heavy
Showers

Papilio Cardamines female

appearing

25

May 1812

14 Thur. Ther at 8 AM. 54. Some
Showers

Terns (*Sterna Hirundo*) come

Found on a ditch bank at the long

strand a Lichen very like *Cladonia*

ochroleuca. E. Bot 2374

15 Fri. Ther at 8 AM. 51. Fine

Veronica Chamaedrys }

Ajuga reptans }

Saxifraga Ajugoefolia } Flowering

Viola tricolor }

Scilla nutans }

Geranium lucidum }

Ranunculus Auricomus }

Stellaria Holostea } In full

Viola Canina } Flower

Allysum Utriculatum }

16 Sat. Ther at 8 AM. 53. Fine

Erica Miditeranea Flowering

Saxifraga Ajugoefolia

Geranoides

17 Sun. Ther at 8 AM. 51 Fine

Scilla Verna

Saxifraga laevis

24

May 1812

18 Mon. Ther at 8 AM. 47.

Cold dark day with a very

Slight Shower

Broom (*Spartium Scopari*

-um)

Mountain Speedwell (*Vero*

-nica)

Marsh Lousewort (*Pedicu-*

-laris Sylvatica)

Flowering

- 19 Tues. Ther at 8 AM. 48. Very
Wet Afternoon
- 20 Wed Ther at 8½ AM. 49½ Dark
dry day.
- 21 Thur. Ther at 8 AM. 47. Fine
day.

Geranium Robertianum }
Anagallis Arvensis } Fl.
Vicia sativa }

Hirundo

27

May 1812

Hirundo Apus and } Arrived

Motacilla Locustella }

Papilio Algeria Appearing

- 22 Fri. Ther at 8 AM. 53.

Fine

Apple trees } Fl

Ledum latifolium }

[Following section was boxed in the original and partially repeated on the

23rd]

Received from Mr O Beorne

of Carrickfergus a Fine

Specimen of the *Doris*

Argo. Bri. Zoo. No. 22

Tulips (*Tulipa Gesneriana*)

Sedum latifolium

Flowering

23 Sat. Ther at 9 AM. 58 Fine

day

Tulips (*Tulipa Gesneriana*)

Fl.

Received from Mr O Boirne

of Carrickfergus a Fine Spe

-cimen of the *Doris Argo*. Bri.

Zoo. No. 22. found by him on

the Shore.

26

May 1812

24 Sund. Ther at 8 AM. 58 Hea-

-vy Showers

Menyanthes trifoliata Fl.

25 Mon. Ther at 8 AM. 59. Show

-ery day.

Kalmia glauca } Fl

Sedum Buxifolium }

26 Tues. Ther at 8 AM. 57. Show

-ery

Azalea Pontica Fl.

27 Wed. Ther at 8 AM. 58 Some

Showers

Acer Pseudo platanus }

Cytisus Laburnum } Fl

Asculus Hippocastanum }

Saxifraga tridactylites. In

Fl.

29

May 1812

28 Thur. Ther at 9 AM. 59.

Some Rain during the

Night.

29 Fri. Ther at 8 AM 55. Wet

day

30 *Paeonia tenuifolia* Sat Ther at 8 AM. 58.

Syringa Vulgaris. Fl.

Prunus Padus In Full Fl

31 Sun. Ther at 8 AM. 54.

Showers with Thunder at a

distance

Paeonia tenuifolia }

hybrida } Fl.

Lysimachia nemorum }

31

[Repeat of 29]

28

June 1812

1 Mon. Ther at 8 AM. 52. Heavy

Rain during last Night a

Slight Shower during the

day

2 Tues Ther at 8 AM. 58½

Heavy Showers

Orobus tuberosus }

Polygala vulgaris } Fl.

Azalea nudiflora }

At about 10 AM went off for

to Visit Col^l. Hyland at Glen

-darach near Crumlin

3 Wednesday

Went with C Hyland in his

Boat to visit Rams Island

in Lough Neagh. During

our

30

[Repeat of 28]

33

June 1812

our Voyage it began to Thunder

which gradually approached
us, and seemed at last to
have no particular cloud
from which the lightening
was emitted, at one moment
it seemed at a distance both
North and South, at another
it Thundered immediately
above our heads, accompanied
by uncommonly heavy Rain
which soon changed to Hail
of such a size and in such
Quantities as I never before
witnessed, two pans belonging
to Col.¹ Hylands Sportmans
Kitchen nearly perfect Cy-
linders received as I could
compute

32

June 1812
compute by my eyesight
an inch of water. On land
-ing the inju
-ry done to the Vegetables
on the Island was truly asto-

-nishing the young Potatoes
Peas and Beans, Goosberries
Currant Apple trees &^c
appeared as if a numerous
company of Men had been
striving to utterly destroy
them, the leaves of the
smaller plants were beat
to the ground, while the
blossoms and leaves of the
bushes and trees were strewn
over the surface, and in
some places buried amidst
still

35

June 1812
still unmelted Hailstones
some of which had been mea-
-sured by people on the Is-
-land immediately on their
falling, and they declared
that some of them measured
two inches in circumference
at this time, about an
hour after their fall the

appeared nearly as



represented in the margin



About 8 PM when we
left the Island, a large
Quantity of the Hailstones
remained in shaded places
undissolved.

34

June 1812

Of the Native Plants the most
remarkable were the following

On the South East Side was
abundance of *Conium ma-*
-culatum. Near the Cottage
among the wave beaten
stones, I found two plants of
Thalictrum flavum E. Bot 367

This is the same as the plant of Portmore [Inserted Line]
near the same place *Circaea*

Park which I have here to fore reckoned [Inserted line]

Lutetiana in plenty, *Rosa*

T. majus but I now think I was wrong [Inserted line]

coesia, Rubus coesius, Lysi

-machia vulgaris, Gallium

Boreale, and Mentha arven

-sis With smooth leaves

were common. *Prunus domes*

-tica appeared perfectly wild

among, the *Sambucus, Alnus,*

and the various species of

Salix.

Along

37

June 1812

Along the Shores I saw many

of the Fresh water Sandpipers

(*Tringa Hypoleucos*) Terns (*Sterna*

Hirundo) and I was so near

two of the Yellow Wagtails

(*Motacilla flava*) as to see all

their colours distinctly, the

yellow on the breast and belly

of the Male was as bright

as the yellow of the Yellow

hammer (*Emberiza citrinella*)

on our return above half a Mile

from the Shore the flood of the
Crumlin river had tinged the
Lake, the roads all the way
to Crumlin had been washed
clean by the heavy rain
and

36

June 1812
every watercourse was become
a Rivulet and every Rivulet
a rapid River
In the hedges on the Road
side between Crumlin and
the lough side was plenty
of *Rosa arvensis* and *Ulmus*
Montana, On the Road side
in the Morning I observed a
large Butterfly like *Papilio*
Cardui.

4 Thursday Left Glendaragh
In Walking through the
Glen at the River side on an
old stump I found (*Hypnum*
curtipendulum.) *Neckera*
curtipendula. Mus Hib. 102. and

among the Shrubbery in Several
places *Vicia Sylvatica*, *Rosa ar-*
-vensis

39

June 1812

-vensis, along the Walk side

near the Waterfall I found

the Rare *Ophrys Nidus*

Avis En Bot 48

About 11 AM. I left Glendaragh

on my return home

Found on the Mountain a *Poly-*

-trichum With a branching stem

and lanceolate subulate leaves, with

the keel serrated towards the Apex

In its present state it resembles

that which I found on a stone

in Colin Glen Ap^l.18. 1804, and

very much *P. sylvaticum* of the

Lin. Tran. 4.8.t.7.fig 6

Another which seems a variety

of *P. commune* of a shorter and

more robust growth than usual

and the mid rib very conspicuous.

Splach

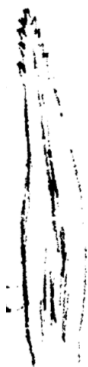
June 1812

Splachnum gracile



Was also now in fructifi-
-cation on old Cow Dung

Bryum nutans was also



in fructification our North-
-ern Specimens are more
like those figured by Dil-
-lenius t.50.p.61. than the
Figure in En Bot. 1240.

Scirpus coespitosus was in Flow-
-er on the Mountain tops as I
past along

On arriving the Mountain face
I found that on Wednesday
there had been heavy Rain

but that the hail had not
reached that length, and

on

41

June 1812

on arriving home I was agree
-ably surprized to find that the
Rain even had been but tri
-fling.

5 Fri. Ther at 8 AM. 59. A tri
-fling shower.

Crataegus Oxycantha } Fl.

Rosa Alpina }

Small Flowering of *Nymphaea*
alba blown

6 Sat. Ther at 9 AM. 65 Fine
day

7 Sun. Ther at 8 AM. 65 Fine
day

Aspodelus Ramosus } Fl.

Lychnis Flos Cuculi }

8 Mon. Ther at 9 AM. 61

43

[Repeat of pdf 41]

40

9 Tues. Ther at 8 AM. 61 Fine
day

Glaux maritima } Fl.

Arenaria marina }

Found in the little pools of Salt
water at at the point fields

Cancer linearis Bri.

Zoo. N^o.31.



Oniscus

Of a Grassgreen with 8 segments
in the body.

10 Wed Ther at 9 AM. 58. Fine
day

Scilla peruviana } Fl.

Rhododendron Ponticum }

The following was written as a

Preface for the Poems of

Blind Jemmy Wilson

In offering the present Volume

to

to my friends my sole endeavours
 were directed to one object; that
 of affording them pleasure at
 a moment when no better ob-
 -ject presented itself.

They may believe me it has cost
 no small trouble to one deprived
 of one of the most useful senses
 and also to those generous friends
 who wrote while I dictated.

By the eye the immagination
 conceives all the images of the
 Sublime and beautiful, how
 often when my mind has been
 drained to the very dregs, have
 I anxiously caught at the
 words of the passing traveller
 when his enraptured tongue
 described, the to him visible
 splendour of the Rising or Set

ting Sun. And how often have
 I longed when I had climbed a
 hill in the course of my Journies, to

behold the extended landscape
describe to me in all that warmth
of enthusiasm, which its beau-
-ties excited. It is true the
blind are often blessed with
a retentive memory, and their
ear is open to all the variety
of sounds, but sight gives to
the mind a more ample range
and opens to it the storehouse
of Knowledge and presents the
means of gratifying the other
senses. The Man with his
eyesight has it in his power
to seize the Ideas of others
and

47

and by selecting and combining
all their beauties to present at
once a brilliant and Captivating
Picture. To the Blind the
book of Wisdom is covered with
a Veil, the Art of Printing which has dif-
-fused Knowledge to an extent
unknown to the brightest ages

of Antiquity, spreads not its
enlivening rays to them, ever de-
pendent on the Generosity of
others, the streams of Knowledge
flow to them in narrow and irriquous
channels. If therefore those
who walk in the boundless fields
of Literature perceive not those
marks of Genius which have
excited their admiration when
viewing the productions of a
more

46

more cultivated soil, it is hoped that
the sharpest arrows of Criticism
will not be shot from a full
stretched bow when it is consi-
-dered under what unfriendly
circumstances the present Vol-
-ume was produced.

The Author has long and strenu-
-ously endeavoured to preserve his
independence by the work of his
hands, yet often has he
been obliged unwillingly to

accept from kind friends that
assistance for a Wife and Chil-
-dren which his most
strenuous exertions could not
procure. still though foiled re-
-solved to persevere when Paille-
-lasses, Cushions and Mattresses
were no longer wanted, He

an

49

June 1812

He an humble Votary invoked
the muses, and with diffidence
now offers the produce of their
inspirations to his kind friends
and generous subscribers.

11 Thurs. Ther at 8 AM. 60. Fine
day

Found a Specimen of *Spongia*

12 Fri. Ther at 8 AM. 59 Fine

Rhinanthus Crista Galli } Fl. [*Rhinanthus Minor*]

Papaver Orientale }

13 Sat. Ther at 8 [Blank] Some

Showers and Thunder Clouds

Iris Pseudo Acorus } Fl

Geum urbanum }

Went to Carrickfergus, and
received from Miss S. Craig some
curious Fossils.

48

June 1812

14 Sun. Ther at 8 AM. 61 Showery

Lilium bulbiferum } Fl.

Rosa Hibernica }

15 Mon. Ther at 8 AM. 59. Showers

Orchis maculata Fl.

16 Tues. Ther at 8 AM. 53. A slight

Shower

17 Wed. Ther at 8 AM. 58. Heavy

Showers

Rhododendron maximum } Fl

Philadelphus coronaria }

Today examined some worms
found by Mr W.^m Tennent in
his Garden in Belfast in great
multitudes on the earth and
creeping on the herbaceous
plants. It appears after

51

examination to be the *Gordius* [Horsehair Worm]

Aquaticus. Lin. and Nat His pl
121. where it is mentioned as
being found in Garden mold
creeping about after rain.

18 Thur. Ther. at 8 AM. 55.

Heavy Rain

Rosa spinosissima

19 Fri. Ther. at 8 AM. 54. Some

Showers

20 Sat Ther. at 8 AM. 54 Some

Showers

Kalmia angustifolia }

Azalea viscosa glauca } Fl

Hieraceum aurantiacum } [*Pilosella aurantiaca*]

Azalea coccinea }

21 Sun Ther at 8 AM. 53. Thun

der with heavy Rain and

Hail

50

June 1812

22 Mon. Ther at 8 AM. 56

Heavy Showers

Rails calling. [Corncrakes]

23 Tues. Ther at 8 AM. 49. One

or two heavy Showers

The Plant which I received
from M^r Harvey as variegated
Fioren Grass. being now in
Flower I have examined it
and find it to be *Alopecu*
-rus geniculatus Burt Lond.5
+6.

24 Wed. Ther at 8 AM. 53. Showers
Sambucus nigra } Flow

Hyoscyamus nigra }

25 Thur. Ther at 8 AM. Fine day
Got a remarkable Specimen
of *Spongia pulchella* Sow Bri
Mis

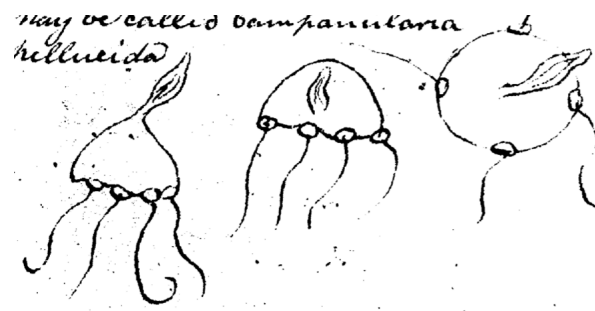
53

from Mr O Beirne.
Went along the shore from
Carrickfergus to the Whitehead
in one of the pools of Sea water
on the Rocks I found an Ani
-mal which from its remarka
-ble transparency I could sca
-rcely determine the shape
of it appeared however as
well as I could observe like

the Genus *Medusa*. If new it

May be called *Campanularia*

pellucida



I also observed another Animal

imbeded in the hard Limestone

in

52

in every little pool, it appeared

to form a tube out of which it

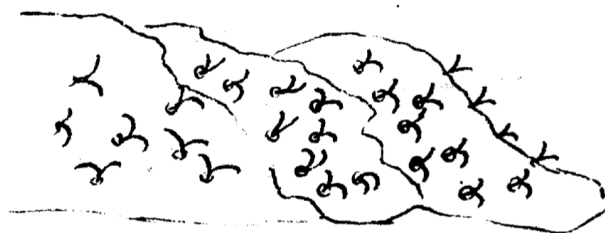
two tentaculæ which it kept

in continual motion, but on

touching them they immedi

ately contracted and disappear-

-ed in their tube.



Vicia Sylvatica Flowering

Found

Fucus fascia }
clavellus }
Ulva foetida } see Fig. } Near the
or *Conferva* } } Whitehead
Conferva albida }

55

- 26 Returned homewards, about
3 O'Clock PM. Mr Tennent
was seized with great pain
which was determined by Dr Forsythe to be
occasioned by Gravel. Nothing
gave him so much ease as
the Warm bath, about 6 O'Clock
after having Opium adminis-
-tered in different ways he got
ease. I after that got home
- 27 Sat. Ther. at 8 AM. 55. Dark
dry day
Lilium pomponium Fl.
- 28 Sun. Ther. at 8 AM. 51. Dark
dry day.
I received some weeks ago the
Pupa of *Phalaena Quercus* Don Bri. In. 104 in- [*Phalera bucephala* Buff-tip
moth]
-closed in its case and this mor-

-ning I discovered that it was

come

54

come forth and for a long time its
whole employment was shivering its
wings.

Examining some Specimens of *Coch*

-learia found the 25th at the White

head they agree perfectly with

C. officinalis in the round form

of the Capsule, and some found

at the point fields have the

elliptic shape of *C. Anglica*, but

how far they are distinct spe-

cies I will not take upon me

to determine

Spiraea aruncus

Rhamnus Frangula [*Frangula alnus* Alder Buckthorn] Swarming

with Common Bees

57

29 Mon. Ther. at 8 AM. 56. Dark

day with a Trifling Shower.

Rubus Corylifolius }

Rosa Collina } Fl

- *Canina* }

30 Tues. Ther. at 8 AM. 53. Very

Wet day

Spiraea Aruncus Fl.

July

1 Wed Ther. at 8 AM. 58. Showery

Branching Aspodel

2 Thur. Ther. at 8 AM. 55. Heavy

Showers

3 Fri. Ther. at 8 AM. 58. Fine

day

Myagrurn Sativum } Fl [*Camelina sativa* False Flax]

Linum sativum }

Wheat Shooting

Mot

56

Motacilla Locustella Singing [*Locustella naevia* Grasshopper Warbler]

4 Sat. Ther. at 8½ AM. 56. A

trifling shower towards Night

Gentiana lutea In Flower

5 Sun. Ther. at 8 AM. 61. Some

Showers

6 Mon. Ther. at 8 AM. 57. Fine

day

Centaurea Scabiosa }

Greater Knapweed } Flow

Lilium Martagon }

7 Tuesday Ther. at 8 AM. 59 Fine

day a Misty Shower

Ligustrum Vulgare

Epilobium angustifolium [*Chamerion angustifolium*]

Motacilla Locustella

Rallus Crex [*Crex Crex* Corncrake]

8 Wed. Ther. at 8½ AM. 61. Fine

Rhododendron hirsutum Flow

Lonicera Periclymenon Saw

59

Saw today the heart of a Herring

it was a triangular pyramid

with its ventricle

as represented



9 Thur. Ther. at 8 AM. 59 Fine

10 Friday Ther. at 8 AM. 59 Fine

day

11 Sat. Ther. at 8 AM. 57. Fine

day.

Received the Skin of a *Squatina*

or Angel Shark caught by

Mr R Reid at the White house
on the evening of the 9th
Clegs Tabanus appear
Common Orange Lily (*Lilium bul*
-biferum) Flowering.

58

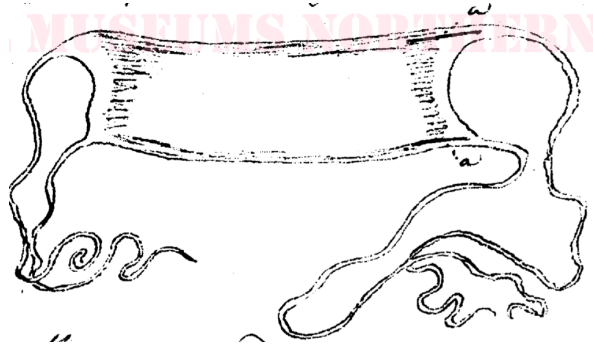
- 12 Sun. Ther. at 9 AM. 61. Fine
day Oats Shooting
Ulva bullosa In the Belfast [*Alga* Green Seaweed]
Water course near Strandmills
Rail calling
5 young Peafowl come out
- 13 Mon. Ther. at 8 AM. 57. Fine
Campanula latifolia Fl.
- 14 Tues. Ther. at 8 AM. 56. Fine
day
Wheat in Flower
Went to Mr John Turnleys
at Rockport
Saw a Drawing of the Black
Goby (*Gobius niger*) by Miss
Wadel from a Specimen
washed on shore during the
winter of 1811.12.
Saw also Drawings of the pro-

gress to maturation of the

eggs

61

eggs of the Dogfish



these are found during the Spring

Storms washed on the Shore by the

waves, and the tendrils fastened to

the *Fucus siliquosus*. By her

observations the enclosed matter

first became opake, then appeared

as if a yolk two slits appearing at a [See drawing above] which

admitted the water, then appeared

the head of the young Animal

which gradually increasing in

size, the umbilical cord became

conspicuous, and the ramifica

-tion of the veins over the pla

-centa became gradually more

and

60

and more apparent.
These variations would seem to contradict the opinion that has prevailed of the *Squalus* Genus bringing forth their young alive, some species however may vary from the others, or their might be some variation even in individuals, those immature eggs, might be cast out along with the living young but this last supposition can scarcely be the case, for if one set required the heat of the body to bring them to maturity the others would scarcely be brought forth in the cold sea water

In her collection of Shells I saw two large Valves of the *Chama*

Cor

63

Cor, they were not less than three inches diameter and one much longer dead than the others.

Anomia cymbiformis

Aiea caudata

Venus virginea

aurea

Trochus [a marine snail]

Among her specimens of plants

Stachys ambigua E. Bot. 2089 [*Stachys palustris* x *sylvatica*]

found near Ballynahinch

Two *Ulvae*

Found on the Shore *Flustra*

bullata with ovate cells with

6 spines about the mouth.

Serpula On the

same piece of *Fucus crispus*

62

15 Wed. Ther. at 8 AM. 57. Fine
day

Menyanthes Nymphioides Fl. [*Nymphoides peltatus* Fringed Water-lily]

16 Thur. Ther. at 8 AM. 62. Fine
Robinia Pseudo Acacia Fl.

17 Fri. Ther. at 8 AM. 60. Fine
day

Saw in the Market 4 or 5 Hake

18 Sat Ther. at 8 AM. 63. Fine
with heavy Shower in the Even

-ing. Rail calling

Went to Divis Mountain found

Scirpus caespitosus going out of [*Trichophorum cespitosum* Deergrass]

Flower, its character is the one

Glume enveloping the head



Found the Underneath Lichens

Baeomyces sparassus E. Bot. 2362

Isidium microsticticum E.Bot. 2243

the likeness almost warrants this

reference. I have still doubts.

65

July 1812

19 Sun. Ther. at 8½ AM. 65. A trifling

Shower

Campanula patula } Fl.

Hypericum pulchrum }

20 Mon. Ther. at 8 AM. 59. Some

small Showers

Rail crying

Campanula Rotundifolia Fl

21 Tues. Ther. at 8 AM. 55. Some

Slight Showers

Clematis integrifolia Fl.

22 Wed. Ther. at 8 AM. 56 Fine
day

23 Thur. Ther. at 8 AM. 57. Some
Rain at the Evening

24 Fri. Ther. at 8 AM. 60. Rainy
Lychnis Chalcedonica Fl.
Campanula Trachelium Fl.

64

July 1812

25 Sat. Ther. at 8 AM. 59 Some
Heavy Showers
Carduus lanceolatus Fl [*Cirsium vulgare* Spear thistle]
Rail calling

26 Sun. Ther. at 8 AM. 59. Heavy
Showers with high Wind
Lysimachia vulgaris } Fl
Hieracium sabaudum }

27 Mon. Ther. at 8 AM. 55. Some
Heavy Showers
Robinia glutinosa F.

28 Tues. Ther. at 8 AM. 55. Showers

29 Wed. Ther. at 8 AM. 57.
Fine day

30 Thur. Ther. at 8 AM. 56. Fine
day with a few drops of Rain

Put into the pond in the

Orchard 8 *Cyprinus Auratus*

Received from Mr R Simms

31 Fri. Ther. at 8 AM. 58 Fine

Calluna Vulgaris } Fl

Epilobium angustissimum } [*Chamerion angustifolium*]

67

August 1812

1 Sat. Ther. at 8 AM. 59. Rain

Found White *Campanula rotundifolia*

on a ditch on the South side of Newtown Ards Road

2 Sun. Ther. at 9 AM. 59. Fine

day

3 Mon. Ther. at 9 AM. 56. Some

Showers

Paid a Renewal Fine of £450

and Fees £10-15-1½ for a Lease

of my Farm for 61 years from

the 1st of May last past.

This day M^r M^cScimmon of

Carrickfergus mentioned to me

a Black toed Gull (*Larus*

crepidatus) had been caught on

a baited hook near Carrickfergus

the fishermen remarked to him

that they seldom appear in
the bay, and that when they
do

66

to see them they are a very
shy bird and keep at a dis-
-tance from their boats and
lines, it is now alive in pos-
-session of the boy who caught
it.

4 Tues. Ther. at 8 AM. 56

Went a Botanical Excursion found

Pedicularis palustris }

Scabiosa Succissa }

Oenanthe fistulosa } Fl.

Cicuta virosa }

Sagittaria sagitifolia }

Observed on the Mountain Stones *Licidia atrata*

E. Bot. 2335

Found on the shore of Lough

Neagh a *Chara* which has

the appearance of *C. nidifica*

but the lower leaves were

torn away so that I could

69

August 1812

could not determine whether

it ever had the long undivi

-ded leaves or not. Found a fine

plant of *Alcea Rosea* on the Shore between [Hollyhock]

In the drains about Port-

between Glenavy River and Portmore [inserted line]

-more I found plenty of *Spar*

-*ganium simplex*. *Cicuta*

virosa was very common on

the sides of the Drain from

Lough Beg. also *Sisymbrium terrestre* and some *Jun*

on a gravelly place on [insert]

-*cus lampocarpus*. Near Lur

the shore of Lough Neagh south of Portmore. [insert]

-gan I saw *Rosa arvensis* Fl.

Gnaphalium minimum [insert]

coesia is to be seen in various

places.

5 Wednesday 5th

M^r OBeirne and I left Lurgan

on our return called at

M^r Owens at Moira and

saw his Orchard where I

got

some shoots of the famous

Moira Cherry which on

my return home I budded

In the Evening Mr O'Bierne

set off home

6 Thur. Went to town a fine
day. Ther. at 3 PM. 66

7 Friday Ther. at 8 AM. 60. Fine
Spiroea tomentosa Fl.

8 Sat. Ther. at 8 AM. 55. Fine
Erica vagans

Lysimachia stricta

9 Sund. Ther. at 8 AM. 63 Fine
Examined a plant received from
M^r Harvey and found it to be
the *Lysimachia quadriflora*
Hort Kew 1. 315. Bot Mag 660

August 1812

10 Mon Ther. at 8 AM. 58 Fine
Gooseberries ripe

11 This Ther. at 8 AM. 58. Fine

12 Wed. Ther. at 8 AM. 58 Fine

13 Thur Ther at 8 AM. 57 Fine

- 14 Fri. Ther at 8 AM. 61. Cloudy
Windy dust flying very much.
Lilium Chalcedonicum Fl
- 15 Sat. Ther. at 8 AM. 60. Slight
rain commenced about 7 AM.
Heavy Rain in the Afternoon
- 16 Sun. Ther. at 8 AM. 64 Thunder
with Heavy Rain.
Lysimachia Ephemera
Lavatera thuringiaca
Found among the Clover in the
Oak tree field *Lolium arvense* Sm. [*Lolium temulentum* Darnel]
Flo Boi. 150. E. Bot. 1125

70

August 1812

- 17 Mon. Ther. at 8 AM. 60. Fine
day
- 18 Tues. Ther at 8 AM. 63. Cloudy
dry day
- 19 Wed Ther. at 8 AM. 63. Heavy
Rain during the Night Showers
through the day
- 20 Thur Ther. at 8 AM. 63 Dry
Trepidia Pavernia Fl
Planted last summer on the

mount at the pond survived last
winter and this morning had a fine Flow

21 Fri Ther. at 8 AM. 59. Showery

Inoculated some of the *Cra-*
taegus

22 Sat. Ther. at 8 AM. 61. Showers

Aconitum variegatum Fl

23 Sun Ther. at 9 AM. 58 Showers

73

August 1812

24 Mon. Ther. at 8 AM. 57.

Dry

25 Tues. A heavy show

-er about 1 PM.

Went to visit the Marchion

-ess of Donegall

Got from her *Anagallis fruticosa*

cuttings.

Cuttings of *Rosa semperflorens*

with single flowers

A plant of *Mauranda semperflorens* [*Maurandya*]

26 Wed. Ther. at 8 AM. 57. Showers

Gentiana Asclepiadea Fl.

27 Thurs. Ther. at 8 AM. 58. Dry

28 Fri. Ther. at 8 AM. 50. Fine

day

72

August 1812

29 Breakfasted at Mr W^m Magees

Got in his Garden a plant of
Red Alpine Strawberry, some
slips of a fine purple Carna-
-tion and of a Myrtle trained
against a South Wall where it
has apparently endured seve-
-ral winters.

29 Sat. Ther. at 1 PM. 63 Fine

Great Single flowering Burnet
leave those (*Rosa Carolina* a) } Flowering
Phlox paniculata }

30 Sun. Ther. at 8 AM. 59. Fine

dark day

31 Mon. Ther. at 8 AM. 58. Fine

day

Went to Carrickfergus

75

September 1812

1 Tues Fine

day

Went from Carrickfergus

accompanied by M^r OBierne &
Counsellor Semple to the
Blackhead. among the Rocks
nearly at low water mark I
found a Specimen of *Doris Argo*
adhering to the Rocks, in the
pools on the Limestone rocks
I again observed the little
animal which perforated this
stone and which I now name
Tentacularia calcarea It
has a black issue head out of which
projects the two tentaculae the
rest of the body is formed like

a

74

a *Neries* [Nereis]. altogether when un-
-stretched is scarcely more than
half an inch long I broke off
some of the stone containing these
Animals, and on immersing
then in a bason of Saltwater
at M^r O Biernes I had an
opportunity of observing them
for a long time.

Found several curious extraneous Fossils on the Shore in the Calcareous Sandstone of Corals two which appears.

Madrepora labyrinthica Ellis. 46.3.4

animularis 53.1.2

Several fragments of Bivalves and that curious substance substance which resembles so much a shell of a *Pinna* -*na* was it not for the transverse structure of its grain (On seeing a specimen of *Pinna loevis* in possession of Mr R Cleland I find it [truncated copy]

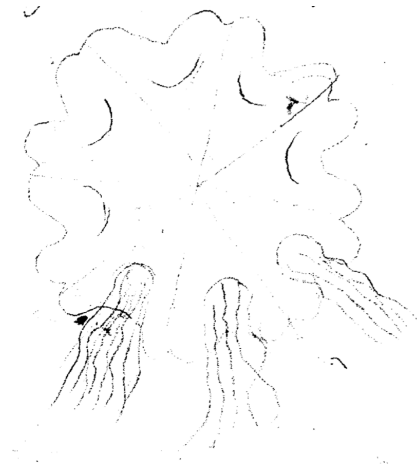
77

September 1812

2 Wed

Among the Ruins at Carrickfergus I found *Sisymbrium Sophia* in plenty

Went afterwards to the shore below Carrick and found floating the *Medusa capillata*



76

Medusa with the Pileus divided into eight indented lobes from the space between each of which a great number of tentaculæ project, and from the centre of the Pileus a plaited membrane

Found on the shore off Rambo

Venus aurea

pullastra

- 3 Thur. Fine
Arrived home about 3 PM
- 4 Fri

79

September 1812

- 5 Sat A few
drops of Rain in the Morning.

Went up the Canal with
the directors as far as Lis
-burn.

Found in a Wet place *Bi*
-dens cernua

- 6 Sun Ther. at 8 AM. 58. Fine
7 Mon. Ther. at 8 AM. 61. Wind
Southerly with dust flying
very much

78

September 1812

- 8 Tues. Ther. at 8 AM. 57. Wet
day
Colchicum variegatum } Fl
Hypericum proliferum }

- 9 Wed. Ther. at 8 AM. 55 Shower
at Night
Lilium Superbum Fl.

- 10 Thur. Ther. at 8 AM. 52. Some
Heavy showers
Went to Mr Cunningham Gregs
brought home
Tradescantia Virginica rubra
Dahlia
Coriaria Myrtifolia

Barnacle Come

- 11 Fri. Ther. at 8 AM. 58. Fine
day

81

September 1812

- 12 Sat Ther. at 8 AM. 59. Fine
day

Went Colin Glen with Coun-
-sellor Semple. Found several
specimens of Shells in the
Sandstone there

And what I think *Tortula im-*
-berbis Sm Fl. Bri 1261

- 13 Sun. Ther. at 9 AM. 59. Wet
day

- 14 Mon Ther. at 8 AM. 58. Misty
rain

Wood Lark Singing

- 15 Tues Ther. at 8 AM. 54. Fine
day

- 16 Wed. Ther. at 8 AM. 57.

Bupthalmum Helian

Atroides got from Mr Har-
-vey in Spring in Fl

80

17 Thur. Ther. at 8 AM. 51 Heavy
Showers

Cyclamen Europeum }

Chelone obliqua } Fl

Colchicum Autumnale }

18 Fri. Ther. at 8 AM. 49 Fine
day with a Shower or two

19 Sat Ther. at 8 AM. 51 Wet
day

Double *Colchicum* Fl

20 Sun. Ther. at 8 AM. 60 Fine
day

21 Mon Ther. at 8 AM. 62. Wet at
Night

22 Tues Ther. at 8 AM. 51. Fine
Aster Mutabilis Fl

23 Wed. Ther. at 8½ AM. 50. Some
Showers

Went to Bangor

83

September 1812

24 Thur. Slight Rain in the Mor-
-ning.

Went to visit M^r Rose Cleland
at Rathgall. Spent the fore-

-noon in examining his collec-
-tion of Native and Exotic Shells
Saw in his Collection two varie-
-ties of *Tellina solidula*



2 Found at Dublin bay by Mr Cleland

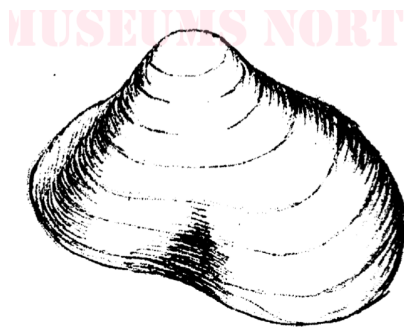


with *Cardium exiguum*

and *Venus ovata*

Found at Newton Lough

82



A very thin shell without hav-
-ing any part thicker than ano-
-ther the hinge was broken away
the colour a whitish brown, the
surface minutely transversely
striated, in all probability a spe-
-cies of *Mytilus*

A single valve on was found by

Mr Cleland at Ballyholme

bay

Murex Campius Don.69.1



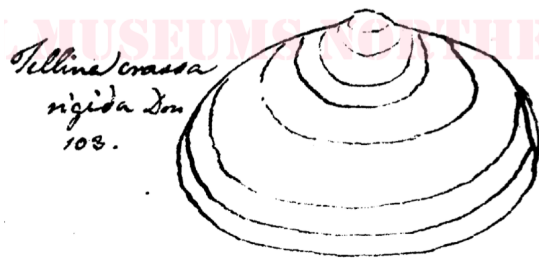
In Newton Lough

84

Tellina crassa

rigida Don

103



Pinna loevis Don.152

Dredged up near Donaghadee

Cardium



He thinks found at Newton Lough

Cardium exiguum. C. pygmaeum

Don. 32.3. with cinereus brown

marks in the inside.

Tellina variabilis Don. 41.2.

Found on the shore near Bangor by

Mr Cleland (also a single valve by

Ellen Templeton) near Bangor)

Patella Graeca Bri.Zool. 09.p.153

Dredged up in abundance by Mr Cleland
of Island Mahee in Newton Lough

85

Murex angulatus Don 156.



Found by Mr Cleland in Newton
Lough.

Trochus conulus of a



light brown. the ridges
wreathed as if a piece of cord. inter-
mediate ones beaded

Trochus apparently *T.conulus* Don
pl.8./2

The ridges of the spires of the spires
beaded

The shell instead of being pearl colour
when the epidermis is worn off

as appears at the Apex of Mr Clelands
specimens is of a bright rose colour

The specimens are of a small

size.

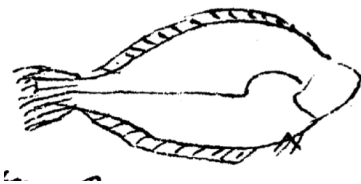


Turbo pullus Don.pl.2./2.3.

Found on the shore at Bangor

87

25 Friday Walked along the shore
to Groomsport and one beyond it
where I found *Chironia littoralis* En
Bot. with *Spergula nodosa* En.
Bot. and on the banks a great
many of *Turbo fasciatus* Don. Shells
t.18.p.1. About Groomsport plenty
of *Cynoglossum officinale*.
Bought from two boys a Specimen
of the Grey Gurnard. (*Trigla Gurnar-
-dus*) of the Dab (*Pleuronectus Lim-
-anda*) its colour a pale brown with
yellow spots lateral line nearly
straight above curved as represented
underneath



and of the Bavin / *Labrus*

Tinca

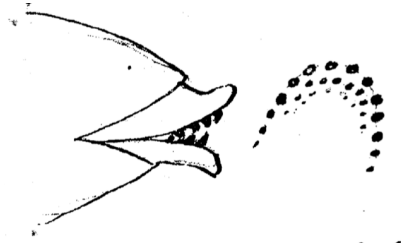
September 1812

Tinca) the extraordinary form of this fish will attract attention. The movable jaws which falls into a hollow of the front from which they of protruded when the fish intends to open its mouth, causes the fish of this Genus and of that of *Sparus* from which they are not Generically distinct if the difference only depends upon the arrangement of the teeth but as I have not had sufficient opportunities of examining them I must leave it to others to determine. In other genera the teeth are placed immediately at the extremity of the head in this Fish there is

[Text truncated]

an upper and under jaw bone capable of being extended and again called back by a peculiar set

of muscles, when the mouth is protruded the fish is capable of opening it, when contracted the jaw seem to be prevented from extending or gaping.



The foremost row of teeth were the largest and placed regularly the interior set seemed placed without any determined position and considerably smaller than the rest.

88

September 1812

26 Sat. A Wet Morning Made

Drawings of

Trochus Conulus

Cardium

27 Sunday Went along the shore of Ballyholme Bay to Grooms-port

Found *Boeomyces sparassus*

Salicornia herbacea with

decumbent stems, clava-

-ted branches, and of a

Red colour

28 Monday Went to Ballyleddy

Saw in Lady Dufferins several

species of *Melaleuca*, *Big*

-nonia

91

September 1812

-nonia grandiflora coming

into flower both in the Greenhouse

and against a Wall the rain

had spoiled the flowers against

the wall. Saw also *Rhamnus*

Alpinus a very pretty plant

with plicated entire lanced

ovate leaves

Got from Lady Dufferin

Tradescantia Virginiana alba

Alyssum Deltoidum Bot M 126

_____ *montanum* 419

Thalictrum Alpinum

Asperula Cyanchica

Cistus aurantiacus

Juniperus renpens slips

Genista triquetra slips

- 29 Tuesday Went with Miss Tem
-pleton to see Mr Clelands Shells
afterwards returned home
Swallows [Truncated]

90

September 1812

- 30 Wed. Ther at 8 AM. 53 Some light
rain

October

- 1 Thur Ther at 8 AM. 47.
2 Fri. Ther at 8 AM. 53 Showery
3 Sat Ther at 8 AM. 57 Wet at Night
and Windy day
4 Sun. Ther at 8½ AM. 64 Windy
day Wet at Night
5 Mond. Ther at 8 AM. 48 Showery
6 Tues. Ther at 8 AM. 48. Wetish
Morning
7 Wed. Ther at 8 AM. 43. Wet at
night
8 Thur. Ther at 8 AM. 54 Very Wet
forenoon. A Flood in the Bog

Meadows

93

October 1812

- 9 Fri. Ther at 8 AM. 47 A Trifling
shower.
- 10 Sat Ther at 8 AM. 45. Wet at
Evening
- 11 Sun Ther at 8 AM. 50. Wet
Night
- 12 Mon. Ther at 8 AM. 50 Wet
at Night
A Swallow
- 13 Tues. Ther at 8 AM. [Blank] Fine
Day some Wet in the Night
Rec^d a Valve of *Chama Cor* from M^r
G Joy found at Bangor in 1811
- 14 Wed. Ther at 8 AM. 47. Some
Heavy Showers
- 15 Thur. Ther at 8 AM. 46 Showers

92

October 1812

- 16 Fri. Ther at 9 AM. 48 Dry
day Redwings Come
- 17 Sat Ther at 9 AM. 44 A show
during the day Wet at Night

- 18 Sun. Ther at 8 AM. 46. Wet
- 19 Mon Ther at 8 AM. 52. Very
 Wet stormy Night. And a
 Very high Tide which broke
 into M^r Thomson reclaimed
 ground & M^r Mays also which
 inundated the New Market
 place and other places doing
 great damage and people
 narrowly escaping out of
 their houses with their
 lives Barometer at 9½
 AM 27. 75.

95

October 1812

- 20 Tues. Ther at 8 AM. 47. A
 Slight Shower
 Tide not higher than a usu
 -al Spring Tide
- 21 Wed - A very fine
 Day at Night Wind and a
 heavy Shower
- 22 Thur. Ther at 8 AM. 50 Squal
 ly With heavy Showers
- 23 Fri. Ther at 8 AM. 49 Showery

- 24 Sat Ther at 9 AM. 52 Fine
day got 2 links of Oats in
- 25 Sun. Ther at 9 AM. 50 Very
Wet day
- 26 Mon. Ther at 8 AM. 42

94

October 1812

- 27 Tues Ther at 8 AM. 41 Fine
day Wet at Night
Wood Lark singing
- 28 Wed Ther at 8 AM. 42 Fine
day
- 29 Thur Ther at 7 AM. 33 Fine
day
- 30 Fri. Ther at 8 AM. 49 Wet
Morning Slight Shower after
Wood Lark singing
- 31 Sat. Ther at 8 AM. 33. Fine
day Wet at Night
Common Wren Singing

November 1812

- 1 Sund. Ther at 8 AM. 49. Wet Morn
- 2 Mon Ther at 8 AM. 39 Dry

97

November 1812

- 3 Tues Ther at 8 AM. 41 Fine
day
- 4 Wed. Ther at 8 AM. 43. Fine
Shower at Night
- 5 Thur Ther at 8 AM. 43 A
Shower
- 6 Fri. Ther at 8 AM. 38 Some
Showers
- 7 Sat. Ther at 8 AM. 35 Some
trifling Showers
- 8 Sun Ther at 9 AM. 32. Some
gentle Showers Thin Ice on
the Pond.
- 9 Mon Ther at 8 AM. 38 Fine
A Slight Shower
- 10 Tues Ther at 8 AM. 39 Fine
day with Slight Rain at
Night.
- On raising the Parlour Hearth
to lay it in a better manner
[truncated]

96

November 1812

- 11 Wed. Ther at 8 AM. 43. Very

Wet from 12.

Phaloesea Meticulosa On the Window

12 Thur Ther at 8 AM. 43. Very

Wet day

13 Fri. Ther at 8 AM. 47. Fine

day Very Wet at Night

14 Sat Ther at 8 AM. 47 Showers

15 Sun. Ther at 9 AM. 40 Fine

day

Went Lambeg gathered

about Lambeg Moss

Jungermania gracillinea

16 Mon. Ther at 8½ AM. 44 Heavy

Showers

Found *Nautilus crispus*

99

November 1812

Discourse intended to be delivered

at a Meeting in favour of Catholic

Emancipation

I am sorry to find that the Dœ-

-mon of Bigotry is rousing his follow

-ers by turning their attention to the

Bloody deeds of Antient Times, the

Massacre of S^t Bartholomews Eve

is again brought to view by prints
and the London Press is busied
in issuing Pamphlets against
toleration. Let not any sect how-
-ever boast of its mildness, each
has in its turn violated the Laws
of Humanity. While the Catholic
Church Placed on her Inquisito-
-rial Throne
seized with her Briarian Arms
and bound to her Flaming stake
the most enlightened Men of the
age. The Church of England with
equal fury even during the Reign
of

98

November 1812
of Elizabeth, doomed to Death
or to confiscation the property of
those, who believed either more
or less than her Thirty nine Ar-
-ticles. Nor has the Church of
Scotland been marked with more
benevolent features, rushing like
a Mountain Torrent impetuous

in its course she bore down
every obstacle which presented
itself before her gloomy creed
To Infidels, Sceptics, Unbelievers,
be not horror struck, to men bran-
-ded with Infamous Names and
for whose death Mad Hymns of
Triumph would have resounded
over Europe is the present age
indebted for the mildness with
which Religion now appears,
they claimed freedom of thought
for

101

November 1812
for themselves and were desirous
that others should enjoy the same
privilege. It was them that
first brought into action that
great and Characterizing precept
of the Christian Religion, unknown
to the most enlightened of the
Heathen world (Do unto others
even as you would that they
should do unto you) it was the

writings and the sayings of In-
-fidels that first clipped the wings
of Bigotry, and quenched the Flames
of Persecution. Let not the Ca-
-tholics think that it is from
the superior merits of their Creed
that Protestants are now willing
to shake hands and become their
friends. It is because that the
light of Knowledge which has
penetrated

100

November 1812
penetrated even the Adaman-
-tine walls of the Monkish
Institutions and spread to its be-
-nign influence over the Minds
of Men, has paved the way for
Justice over which she now
walks with a firm pace and
commanding aspect. Think
not now that she is abroad al-
-though slow her pace she will
cease to fulfil her heavenly com-
-mission until the

the bonds of all Sectarians are
broken, and until those ensigns
of intolerance which now glit-
-ter with the Midday
Sun deforming the Village Land
-scape shall cease to point out
to the Traveller here reigns spi-
-ritual Despotism.

A

103

November 1812
A greater absurdity never entered
the mind of Man than to compel
all Men to relish the same food
either for the Body or the Mind.
The Great Author of Nature has
made mens minds as various
as their features, and vain is
the attempt to bind the consci-
-ence, although even with Cha-
-ins of Gold, an outward com-
-pliance with Royal Creeds
may be purchased, but the Mind
bursting assunder every bond
asserts its Divine prerogative,

Freedom of thought is the gift
of the Divinity, no power on
Earth can prescribe bounds
to its flight, and happy am
I to find that Men of the deep
-est thought are the most li-
-beral

102

November 1812

beral, and that among them
the Religious Opinions of every
Sect meets with its due respect
well knowing that however Ca-
-tholic and Protestant may
differ in Speculative matters,
in works of Benevolence they
are both United.

- 17 Tues. Ther at 8 AM. 40 Dark
dry day
- 18 Wed. Ther at 8 AM. 39. Fine
day
- 19 Thur Ther at 8 AM 31. Fine
- 20 Fri. Ther at 9 AM. 28 Some
Showers and thawing in the
Middle of the day Ice above

½ an inch thick

105

21 Sat Ther at 8 AM. 34 Fine

Bright day

22 Sun. Ther at 7½ AM. 29 at

9 AM. 31. at 2 PM. 35

23 Mon Ther at 8 AM. 42. Dark

some Misty Rain

24 Tues. Ther at 8 AM. 50 Wet

day

25 Wed. Ther at 8½ AM. 50 Wet

Common Wren singing

26 Thur Ther at 8 AM. 48. Wet

day

27 Fri. Ther at 8 AM. 44. Trifling

showers

28 Sat Ther at 8 AM. 49 Fine

dry day

104

November

29 Sun. Ther at 9 AM. 50 Fine

day Wet at Night

30 Mon. Ther at 8 AM. 50.

Got at Mr McCalmont

December

1 Tues Ther at 9 AM. 46. Some

Trifling Rain

Finished drawings of *Junger*

-mania heterophylla and

J. excisa Found some time

ago

2 Wed. Ther at 9 AM. 45

Found *Peziza nivea* and

Clavaria militaris growing

on the Chrysalis of a Moth

107

3 Thur Ther at 8 AM. 39

Thrush Wren Singing

4 Fri. Ther at 9 AM. 48 A

Slight Misty Rain during

the Most of the forenoon

Received from M^r Mackay

Jungermania Hutchinsia

Found at Hermitage Glen C. Wicklow

Dicranum like *crispum*

Found near Coventry England

Received from D^r Taylor

Jungermania Dicksoni

Grimmia trichodes

Hypnum revolvens

Sphagnum squarrosum

Funaria Templetonia

Grimmia nova species

Equisetum variegatum

109

[Repeat of pdf 107]

106

December 1812

5 Sat Ther at 8½ AM. 45 Dry

Found *Jungermania bicuspidata*

growing on the corn rick at the

Old Moss hole

6 Sun. Ther at 9 AM. 41 Dry

7 Mon. Ther at 8½ AM. 35 Fine

Determine that what I

supposed *Jungermania minuta*

is *J. undulata*

8 Tues. Ther at 8 AM. 29. Frosty

9 Wed. Frosty

10 Thur Ther at 9 AM. 35½ Dark

dry day

108

[Repeat of pdf 106]

111

- 11 Fri. Ther at 8 AM. 33 Some
hail
- 12 Sat Ther at 9 AM. 32 Some
Flakes of Snow fell during the
day
- 13 Sun Ther at 9 AM. 30 Fine
- 14 Mon Ther at 8 AM. 30 Dark
day thawing a little
- 15 Tues Ther at 8 AM. 37 Dark
day with an Easterly Wind
- 16 Wed. Ther at 9 AM. 35 Hail
falling at Night, which made
one think that the superior
stratum of the Atmosphere being
warm enough for rain we would
have a thaw

110

December 1812

- 17 Thur. Ther at 9½ AM. 37. Thaw
-ing
- 18 Fri. Ther at 8 AM. 37 Rain
at Night
- 19 Sat Ther at 8 AM. 36. Wet
day
- 20 Sun. Ther at 8 AM. 40

Dark dry day

21 Mon. Ther at 8½ AM. 40 Dark

day with a Slight Rain

toward the Evening

22 Tues Ther at 8 AM. 34 Very

Misty day

23 Wed Ther at 8 AM. 34 A

few drops of Rain

Went to Visit D^r Drennan

113

24 Thur. Returned from D^r

Drennan

Got there Great Maidens

blush Rose

25 Fri. Ther at 9 AM. 37. Dark

dry day

26 Sat. Ther at 9 AM. 35 Da

Fine dark day

Found and Made a Drawing of

Mucor pendulinus a New fungus

27 Sun Ther at 8½ AM. 33 Dark

dry

28 Mon. Ther at 8 AM. 40. Fine

day

29 Tues. Ther at 8 AM. 45 Fine

Breezy After a Windy Night

30 Wed. Ther at [Blank] Stormy

Night Calm pleasant day

with a slight Misty Rain

112

31 Thur Ther at 9 AM. 46

115

[Blank]

114

[Folded insert, see pdf 116 for full text]

116

Speech Composed for M^r Eldred Potinger

when he stood Candidate for the County of Down 1812

Though I cannot boast of Nobility among
my Ancestors, I can boast of their bearing a
title above what even Kings can confer, that
of Honest Men. In presenting myself,
I come independent as yon bird which scims
the swelling wave, the creature of no Minis-
-ter, the tool of no Lord. Citizens if you
think me worthy of being your representative,
I go to attend my duty in Parliament, ready
on all occasions to stand forth the defender
of your Rights and the Rights of Ireland

I come not from a distant land, I have
dwelt among you, as my forefathers have done
before me,
I am connected to you by the closest ties, your
Interests are my Interests. If I am so happy
as to be your representative it is the sincerest wish
of my heart that I may never fail in my
duty to you and to my Country, and that
when I return again to solicit a renewal of
your favours, my Conduct may be a ready
passport to a second tryal

117

Strongly impressed with the Idea, that upon
the incorruptibility, independence, and public
spirit, of the Elected, depends the Property
Liberty, Happiness and Life of the Electors
I feel a diffidence which must arise in the
mind of every Man, when about to receive
a trust so Sacred, but it is a duty which
My Country calls upon me to execute, and I
feel emboldened by the fervour which this
Country, has at all times expressed for the
cause of Liberty. Citizens! I call not upon you
to take up Arms, but I call upon you to give
your attention, your Rights are daily invaded

not by an open Foe, for him your courage
would repel, but by the Noiseless, insiduous,
Snail like encroachments of an Aristocratic
Faction. You have seen the Great Charter of
British Liberty treated with contempt, and those
Bulwarks of your rights the Habeas Corpus Act,
and a free press destroyed, The Freedom of
Conscience checked by old and for a length of
time dormant laws, and an equality of Rights

withheld

Summary of the changes to pdf order:

pdf

1	
2	Jan 1-6
3	Blank [Jan 7-20 missing]
5	Jan 21-24 two rayed ventral
4	25-27 ventral fins..... [Jan 28 - Feb 8 missing]
7	Feb 9-14
6	Feb 15-19
9	20-23
8	Feb 24-25 <i>Phye</i> [Feb 26-Mar 6 missing]
11	March 7-14
10	March 15-20
13	March 21-27
12	March 28-29 exerting equally their powers
15	March power to form..... which remain
14	March 30-31 1-3
17	April 4-9
16	April 10-14
19	April 15-19
18	April 20-25

21	April	26-30	
20	May	1-6	
23	May	7-9	Went to Mr Harveys...
22	May	10-13	
25	May	14-17	
24	May	18-21	
27	May	22-23	<i>Hirundo apis</i> arrived..... on the shore
26	May	24-27	
29	May	28-31	
31		=29	
28	June	1-3	
30		=28	
33	June		our voyage..... as I could compute
32	June		compute my eyesight..... buried amidst still
35	June		still unmelted..... undissolved.
34	June		Of the native plants..... Along
37	June		Along the shores..... rain and
36	June	4	every watercourse..... <i>Rosa ar-vensis</i>
39	June		<i>-vensis</i> <i>Splach</i>
38	June		<i>Splachnum</i> ,and on
41	June	5-8	on arriving home.....
43		=41	
40		9-10 volume to
42		=40	
45			to my friends my..... rising or set
44			ting sun. ideas of others and
47			and by selecting..... more
46			more cultivated soil....., he an
49	June	11-13	He an humble votary..... curious fossils.
48	June	14-17 It appears after
51		18-21	examination to be....
50		22-25	
53			from Mr OBierne..... Limestone in
52			in every little pool..... <i>conferva albida</i>
55	June	26-28 come
54			come forth..... common bees
57	June July	29-3	
56	July	4-8	... Saw
59	July	9-11	Saw today the heart..... Flowering
58	July	12-14	12..... maturation of the eggs
61	July		eggs of the dogfish..... gradually more and
60			and more apparent..... <i>Cor</i>
63			<i>Cor</i> ,..... same piece of <i>Fucus Crispus</i>
62	July	15-18	
65	July	19-24	
64	July	25-31	
67	Aug	1-3 when they do

66	Aug	4-5	to see them.... so that I could
69	Aug		could not..... where I got
68	Aug	6-9	some shoots of....
71	Aug	10-16	
70	Aug	17-23	
73	Aug	24-28	
72	Aug	29-31	
75	Sept	1formed like a
74	Sept	1	a Neries....
77	Sept	2	
76	Sept	3-4	
79	Sept	5-7	
78	Sept	8-11	
81	Sept	12-16	
80	Sept	17-23	
83	Sept	24- Found at Newton Lough
82	Sept		A very thin shell..... In Newton Lough
84	Sept		<i>Tellina crassa</i> in Newton Lough
85	Sept		<i>Murex angulatus</i> Found on the shore at Bangor
87	Sept	25- <i>Tinca</i>
86			<i>Tinca</i> head in this Fish there is [truncated]
89			an upper and under jaw bone..... smaller than the rest.
88	Sept	26-28	
91	Sept	28-29	
90	Sept	30-Oct 8	
93	Oct	9-15	
92	Oct	16-19	
95	Oct	20-26	
94	Oct	27-Nov 2	
97	Nov	3-10	
96	Nov	11-16	
99	Nov		Discourse intended to be..... during the reign of....
98	Nov		of Elizabeth,..... freedom of thought for...
101	Nov		for themselves and were..... knowledge which has penetrated
100	Nov		penetrated even the..... spiritual Despotism. A
103	Nov		A greater absurdity never..... are the most liberal...
102	Nov		beral, and that among them..... an inch thick
105		21-28	
104	No/De	29-2	
107		3-4	<i>Equisetum variegatum</i>
106	Dec	5-10	
108			[Repeat of 106]
111		11-16	
110	Dec	17-23	
113		24-30	
112		31	
115			[Blank]

114 [See pdf]

116

Speech Composed for..... to a second tryal

117

Strongly impressed..... equality of Rights withheld